

# Style Guide

Your toolkit on home design, material colour palettes & exterior facades from leading Australian brands.





# Bring Your Home To Life

If you are building or renovating, you need confidence in what you select from the beginning. We believe the choices you make for the exterior of your home set the tone for your interior. These decisions will influence the way you and your family live and how your home will last well into the future.

The *CSR Style Guide* is inspired by global trends, adapted to suit Australians. We have worked closely with leading design studio Nexus Designs to showcase six home designs and nine exterior material colour palettes that hero the beauty and flexibility of our products – and how they can be used on popular and emerging home styles.

At CSR, we don't see ourselves as a supplier, we are a partner in your build – working with you to create a home that makes you smile every time you enter the front door. Discover the beauty of Monier™ Roof tiles and the tactility of PGH Bricks & Pavers. Consider clever cladding with Cemintel and Hebel, through to industry-leading ventilation and insulation solutions with Bradford™. CSR brings the best of both Australian ingenuity and tradition to your build.

Turn the page to explore the *CSR Style Guide*, a comprehensive toolkit offering inspiration and industry advice in home designs and material colour palette selections for your home's exterior.





# Your Design & Build Toolkit

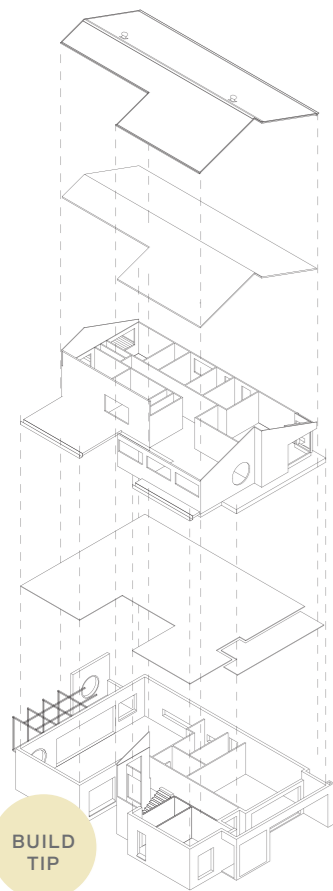
Considering the design of your home, as well as the materials and products used to create it, is an important step in your build journey. To help you get started, here are some important tips and considerations.

## YOUR HOME DESIGN

On the following pages you will find six popular and emerging home designs along with our suggested material colour palettes comprised of CSR's material facade and build solutions. From *Contemporary* to *Industrial*, choose the home design you love. Take our *CSR Style Quiz* online to discover your home design style, then overlay our material colour palettes. To help you bring your home to life even more, experiment with our *CSR iDesign* visualiser tool so you have a complete view of what your new home can look like.

## YOUR LOCATION

Do you live in the city or a more rural or coastal region? Lighter shades and airy designs often work better in warmer climates, while rich and dark palettes combined with connected interior spaces are often suited to cooler areas. Consider the natural landscape and outdoor space you need as this can impact the choice of home design and materials.



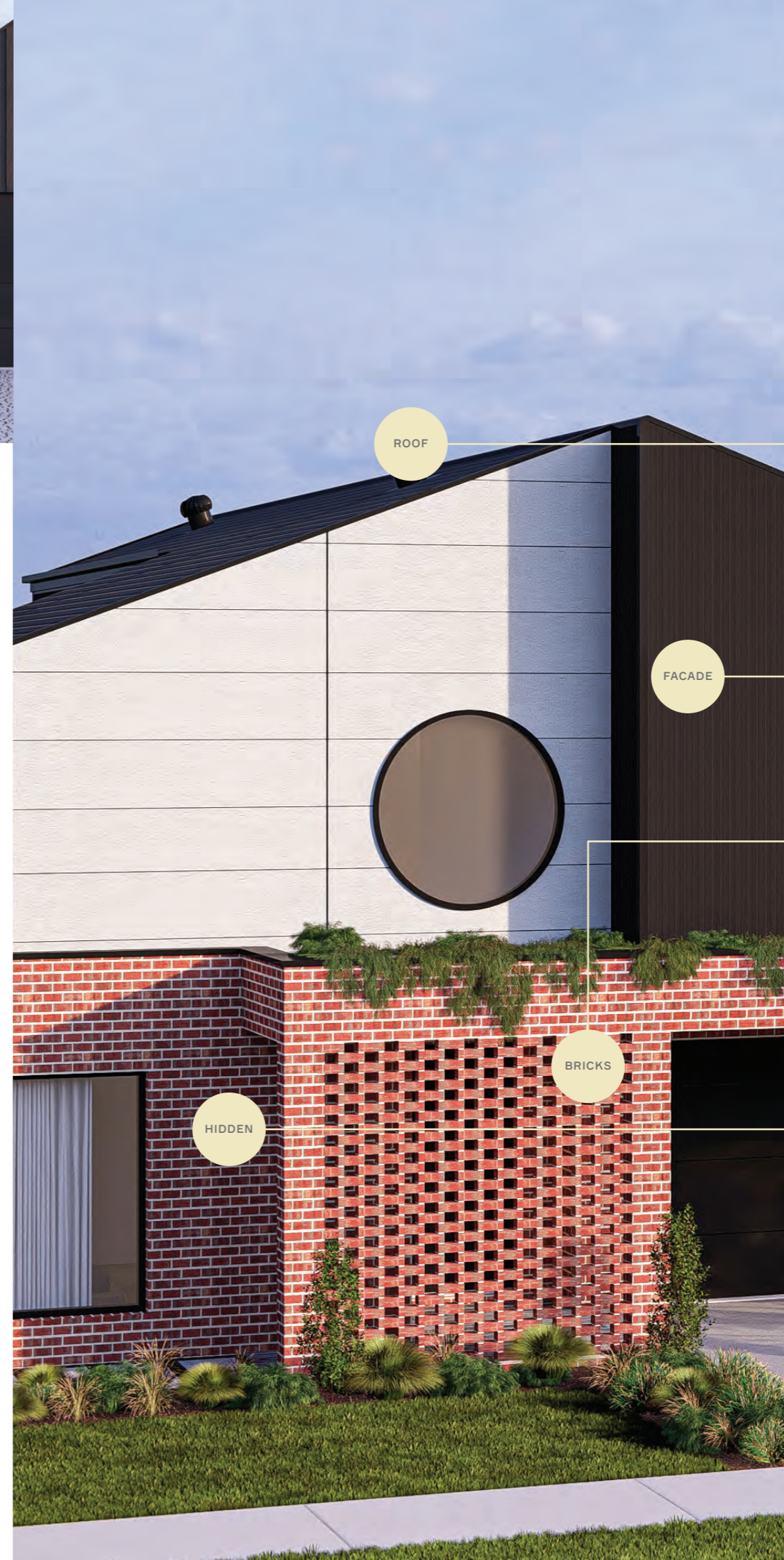
**BUILD TIP**

KEEP AN EYE OUT FOR THESE DRAWINGS THROUGHOUT THE CSR STYLE GUIDE. THEY HIGHLIGHT THE INVISIBLE LAYERS OF PRODUCT THAT CAN ADD COMFORT, VALUE AND LONGEVITY TO YOUR BUILD.

FOR FURTHER ADVICE & INFORMATION ON PRODUCT SELECTION FOR YOUR HOME, START WITH THE CSR STYLE QUIZ. SCAN THE QR CODE TO TAKE OUR QUIZ ONLINE & DISCOVER YOUR STYLE



EXPLORE YOUR DESIGN & BUILD TOOLKIT  
[DWELLING.CSR.COM.AU](http://DWELLING.CSR.COM.AU)



## WHAT MATERIALS TO USE?

Once you have decided on your home design and material colour palette, it's time to look at the details. All CSR products are available in a variety of colours, sizes, profiles and textures, allowing you to build the style you want, from the outside in.

On top of your home is Monier Roofing, available in a variety of colours and flat or classic profiles. Consider the type of ridge capping (the cover where two tiles meet) as this impacts the finish of your roof. Don't forget to look at vents from Bradford Ventilation, which are important to creating a more comfortable, healthier and energy efficient home.

Cladding is the outer visible surface of your home's facade. Fibre cement cladding such as Cemintel or aerated concrete cladding such as Hebel are available in a variety of colours and can be installed in different ways depending on the design of your home.

PGH Bricks & Stone bring added dimension to your home facade. The way bricks are laid is called a *bond*. Stretcher, Stacked or Flemish bonds are the most common. Hit-and-miss bond, as seen here in our *Industrial* home design, brings added dimension, privacy and stacks of style.

## WHAT YOU CAN'T SEE MATTERS!

Our *Industrial* double storey home design shown here not only looks good – within its layers are performance and energy efficiency products that help it feel good as well. As one of Australia's leading suppliers of insulation and acoustic solutions, Bradford Insulation and Ventilation products improve the performance of your home for year-round comfort and longevity.

# Contemporary

CLEAN & ELEGANT

BRADFORD™ VENTILATION  
SUPAVENT™ ROOF VENT  
COLORBOND® SURFMIST®

HEBEL POWERPANEL<sup>XL</sup>  
CLADDING IN DULUX®  
HOG BRISTLE® HALF

CEMINTEL CLADDING  
TERRITORY™  
WOODLANDS LIMED

PGH BRICKS  
MANHATTAN –  
EAST HAMPTON

A Contemporary home is about elegance. Whether strong and straight lines or soft and rounded curves, this design style is impressive.

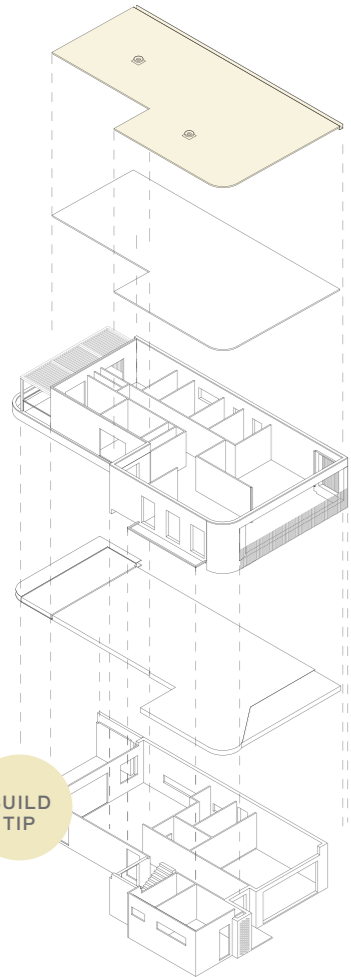
The key elements of a *Contemporary* design invoke a commitment to minimalism, allowing curvaceous exteriors to flow seamlessly into the interiors using a pared-back palette that is reflected throughout the connecting spaces.

A soft layer of *Easy Neutrals* is the perfect complement for a *Contemporary* home design. Whether strong and straight, or soft and rounded, this design style is impressive. Keep it clean by selecting minimal exterior materials, and from within, embrace long views and natural light.

Prefer a *Contemporary* home design with more drama? Consider the sleek materials and graphic colours of the *Bold Blacks* palette on Page 16.

SCAN QR CODE TO  
VISUALISE IN CSR IDESIGN





**BUILD TIP**

**WHAT YOU CAN'T SEE**

Don't forget the products that lie in the hidden layers of your home also contribute to its performance.

This CSR *Contemporary* home design features Bradford Anticon™ Roof Blanket, a foil-faced glasswool insulation layer that is specifically designed for metal roof applications, such as the flat roof you see above, and helps control condensation, acoustics and thermal performance.

BUILD YOUR HOME IN

# Easy Neutrals

A material palette of textural touches and elegant tones, Easy Neutrals pairs harmoniously with a Contemporary home design. In this gentle palette, linear cladding pairs with raw and rendered finishes to showcase a minimalist look.

**PRODUCT & STYLING TIPS**

- 1 Taking cladding such as brick or weatherboard into the external front entry will establish a textural link between indoor and outdoor spaces.
- 2 Choose bricks with a weathered and raw appearance to add texture without interfering with the colour palette. The Manhattan range has been purpose-made to reflect a recycled look while offering consistent strength, durability and longevity, plus the benefits of Exposure Grading for tough weather.
- 3 When designing a garden to complement *Easy Neutrals*, look to native grasses and eucalypts in softer shades of green and silvers to balance its muted tones.



**EASY NEUTRALS FEATURES (CLOCKWISE FROM TOP):** MONIER™ ROOFING CONCRETE HORIZON ROOF TILE – SEASHELL | CEMINTEL CLADDING EDGE® BOND 75MM PAINTED DULUX® WEATHERSHIELD® IN DULUX® HOG BRISTLE® QUARTER (LOW SHEEN) | GUTTER/FASCIA/TRIMS COLORBOND® SURFMIST® & COLORBOND® EVENING HAZE® | METAL ACCENT STAINLESS STEEL | TIMBER FINISH NATURAL TIMBER BATTENS | CEMINTEL CLADDING TERRITORY™ WOODLANDS LIMED | PGH BRICKS MANHATTAN – EAST HAMPTON | ACCESSORY FLOS MINI GLO-BALL LAMP | HEBEL POWERPANEL™ CLADDING RENDERED WITH DULUX® ACRATEX® COATING SYSTEM IN DULUX® HOG BRISTLE® HALF | BACKGROUND PAINT ACCENT DULUX® VIVID WHITE™

# Industrial

STRIKING & DYNAMIC

BRADFORD™ VENTILATION  
WINDMASTER™ ROOF VENT  
COLORBOND® NIGHT SKY®

MONIER™ ROOFING  
CONCRETE CAMBRIDGE  
ROOF TILE – SOHO NIGHT

CEMINTEL CLADDING  
TERRITORY™  
RIDGE BLACK

CEMINTEL CLADDING  
TERRITORY™  
QUARRY CONCRETE

PGH BRICKS  
CHARACTER – JARRAH

An Industrial home features contrasting finishes and warehouse-style rooflines. Striking and textural elements make this a dynamic home design.

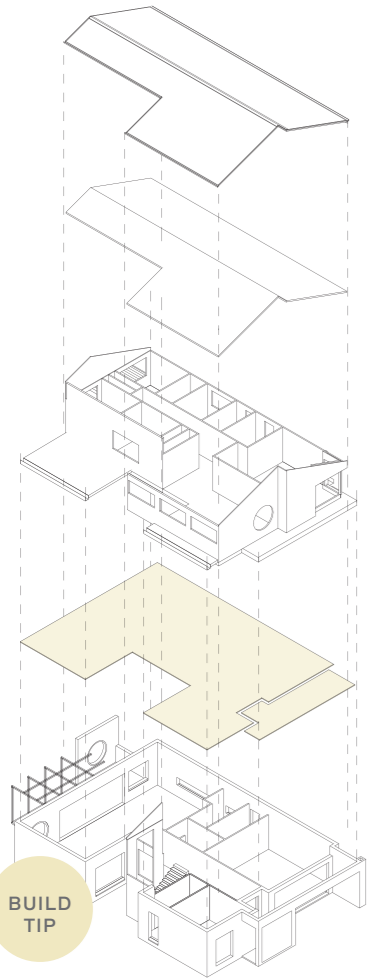
Our *Industrial* home design reflects the raw materials and aged facades of warehouse-style living to create an authentic, textured appearance.

Here, this design is built in *Strong Darks*, featuring contrasting cladding and warehouse-style rooflines. Striking and textural elements make this a dynamic home design. Be brave mixing rough and smooth textures and embrace natural light through large doors and windows. *Strong Darks* is a dramatic and rich material palette overlaid with warm tones of reds and russet. It's a palette that celebrates and complements the varied textures and mixed materials that are the hallmarks of warehouse-style design.

For an alternative approach, consider the sophisticated combination of our *Rich Browns* palette on Page 12.

SCAN QR CODE TO  
VISUALISE IN CSR IDESIGN





**BUILD TIP**

**WHAT YOU CAN'T SEE**

Don't forget the products that lie in the hidden layers of your home also contribute to its performance.

This double storey CSR *Industrial* home design uses Hebel PowerFloor to reduce sound transfer between levels plus its thermal properties help keep your house warmer in winter and cooler in summer.

BUILD YOUR HOME IN  
**Strong Darks**

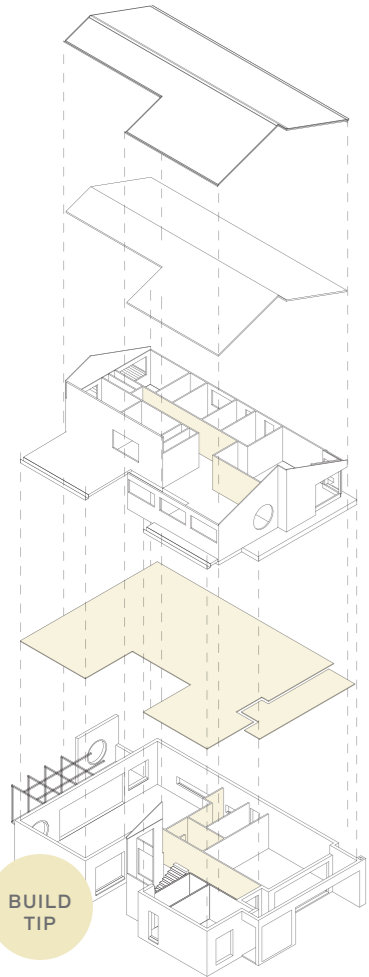
A dramatic material palette, Strong Darks offers a complex combination of products in textural tones of reds, charcoals and greys. This authentic material colour palette is perfect for a striking Industrial home.

**PRODUCT & STYLING TIPS**

- 1 To complete the *Industrial* look with bricks, consider a Stretcher bond or even Hit-and-miss brickwork with flush off-white mortar. Learn more about varieties of brick bond and mortar finishes on Page 35.
- 2 Make the most of natural light and bring in fresh air whenever possible through high-placed windows and Bradford Ventilation Windmaster™ wind-driven roof ventilation.
- 3 When planning the design of a garden to complement an *Industrial* home design, consider trellised vines such as Jasmine or perhaps trailing plants such as Licorice Plant (*Helichrysum Licorice*) from balconies or pots, offset with statement trees such as *Magnolia Grandiflora*.



STRONG DARKS FEATURES (CLOCKWISE FROM TOP): BRADFORD™ VENTILATION WINDMASTER™ ROOF VENT – COLORBOND® NIGHT SKY® PGH BRICKS CHARACTER – JARRAH | METAL ACCENT COLORBOND® MANOR RED® | CEMINTEL CLADDING TERRITORY™ QUARRY CONCRETE GUTTER/FASCIA/TRIMS COLORBOND® NIGHT SKY® & COLORBOND® MONUMENT® | CEMINTEL CLADDING TERRITORY™ RIDGE BLACK MONIER™ ROOFING CONCRETE CAMBRIDGE ROOF TILE – SOHO NIGHT | BACKGROUND PAINT ACCENT DULUX® WESTERN MYALL



**BUILD TIP**

**WHAT YOU CAN'T SEE**

Don't forget the products that lie in the hidden layers of your home also contribute to its performance.

This double storey CSR *Industrial* home design uses Bradford SoundScreen™ Acoustic Insulation, a high-density glasswool acoustic insulation product ideal for use in internal walls and mid-floors to reduce noise transfer.

BUILD YOUR HOME IN

# Rich Browns

This material palette layers dark and moody shades of chocolate brown with undertones of rich deep purple and hints of grey green, showcasing tonal texture for a sophisticated Industrial home design.

**PRODUCT & STYLING TIPS**

- 1 Soften industrial-style surfaces by layering with the prefinished Cemintel Territory™ Woodlands range.
- 2 Bring exterior brickwork indoors for a powerful style statement such as a feature wall, fireplace or flooring.
- 3 For planting choices, look to shades of lilac to complement the *Rich Browns* palette, including easy-care Agapanthus paired with a ground cover of Creeping Thyme (*Thymus serpyllum*).

**RICH BROWNS FEATURES (CLOCKWISE FROM TOP):** MONIER™ ROOFING CONCRETE HORIZON ROOF TILE – WOLLEMI | CEMINTEL CLADDING TERRITORY™ WOODLANDS KWILLA SLATS | GUTTER/FASCIA/TRIMS COLORBOND® MONUMENT® | CEMINTEL CLADDING EDGE® BOND 75MM PAINTED DULUX® WEATHERSHIELD® IN DULUX® WILD BRUMBY (LOW SHEEN) | GUTTER/FASCIA/TRIMS COLORBOND® WOODLAND GREY® | ACCESSORY PITTELLA BELLAGIO DOOR HANDLE | PGH BRICKS DARK AND STORMY – MONSOON | BACKGROUND PAINT ACCENT DULUX® STORM WARNING



# Barnhouse

MINIMALIST & DRAMATIC

BRADFORD™ VENTILATION  
SUPAVENT™ ROOF VENT  
COLORBOND® NIGHT SKY®

MONIER™ ROOFING  
TERRACOTTA URBAN  
SHINGLE ROOF TILE – TITAN

CEMINTEL CLADDING  
TERRITORY™  
WOODLANDS EBONY

HEBEL POWERPROFILE®  
CLADDING TRAPEZOIDAL  
PROFILE RENDERED  
COLORBOND® MONUMENT®

HEBEL POWERPANEL<sup>XL</sup>  
CLADDING IN  
DULUX® VIVID WHITE™

With a symmetrical gable roofline, clean angular lines and long, open spaces, Barnhouse design is dramatic and minimalist.

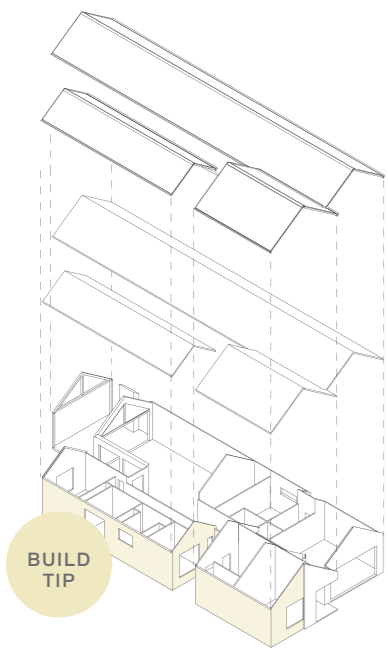
*Barnhouse* is an elegant, urban take on country style with an updated aesthetic and clean vertical lines. *Barnhouse* homes feature classic cladding, a symmetrical gable roofline and long, open spaces; it's a design that is dramatic and minimalist.

With such a simple shape, materials should be uniform and sleek, and make the most of big picture windows and connection to outside spaces. These styles of homes work well with the *Bold Blacks* material colour palette, featuring statement dark shades that complement bold vertical lines in the materials, which in turn accentuate the angular elements of the architecture.

For a softer, less bold approach, try our *Warm Greys* palette on Page 18, which includes warmer tones.

SCAN QR CODE TO  
VISUALISE IN CSR IDESIGN





**WHAT YOU CAN'T SEE**

Don't forget the products that lie in the hidden layers of your home also contribute to its performance.

This *Barnhouse* design uses Bradford Gold™ and Gold™ Hi-Performance Wall Batts as thermal barriers to enhance thermal resistance to help slow down temperature change to the inside of the home, keeping your house warmer in winter and cooler in summer.

BUILD YOUR HOME IN

# Bold Blacks

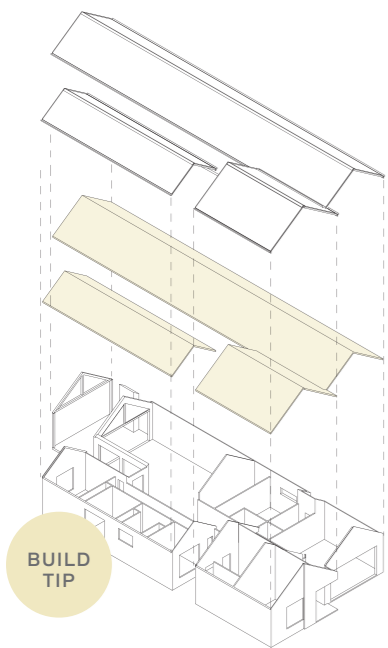
Strongly defined, the Bold Blacks material palette is all about contrast and showcasing the raw beauty of the base materials. Contrasting shades highlight the clean lines and angular elements of a Barnhouse design.

**PRODUCT & STYLING TIPS**

- 1 Finish a *Barnhouse* roof with A-line ridging, which provides a clean finish that complements flatter-profile roof tiles.
- 2 Hebel's PowerProfile® is an affordable option compared to that of standing seam and similar metal cladding systems and has two unique accessory profiles to achieve the look, Trapezoidal and Bullnose.
- 3 Fencing is a key element for streamlined homes such as *Barnhouse* or *Contemporary* designs; consider black timber batten fencing combined with a planting mix of eucalypts and native grasses.



**BOLD BLACKS FEATURES (CLOCKWISE FROM TOP):** MONIER™ ROOFING TERRACOTTA URBAN SHINGLE ROOF TILE – TITAN  
 HEBEL POWERPROFILE® CLADDING TRAPEZOIDAL PROFILE RENDERED COLORBOND® MONUMENT® | CEMINTEL CLADDING MOSAIC® CLADDING  
 PAINTED DULUX® DESIGN CONCRETE EFFECT ONYX EDGE | HEBEL POWERPANEL™ CLADDING RENDERED WITH DULUX® ACRATEX® COATING  
 SYSTEM IN DULUX® VIVID WHITE™ | GUTTER/FASCIA/TRIMS COLORBOND® MONUMENT® & COLORBOND® NIGHT SKY® ACCESSORY PITTELLA  
 MARALINA LA LUNA DOOR HANDLE CEMINTEL CLADDING TERRITORY™ WOODLANDS EBONY | BACKGROUND PAINT ACCENT DULUX® VIVID WHITE™



**WHAT YOU CAN'T SEE**

Don't forget the products that lie in the hidden layers of your home also contribute to its performance.

This *Barnhouse* design uses Bradford Thermoseal™ Roof Sarking which acts as a weather barrier under tiled roofs and minimises heat build-up inside your roof.

BUILD YOUR HOME IN

# Warm Greys

A calming and soft selection of warm hues and textural finishes, the Warm Greys material palette layers shades of grey on the clean form of a Barnhouse design for subtle perfection.

**PRODUCT & STYLING TIPS**

- 1 Bring your external style indoors; Cemintel Edge™ Cladding fibre cement for a feature wall is an alternative to traditional tongue and groove timber wall joints.
- 2 In a bushfire zone? Choose Bushfire Attack Level (BAL) rated products appropriate to your rating, including Bradford Fireseal range, made from non-combustible Rockwool. Always check with your builder before selecting materials in a bushfire area.
- 3 *Warm Greys* is best complemented by silver-toned plantings; try Lambs Ear (*Stachys lanata*) mixed with Dichondra Silver Falls (*Dichondra argentea*) as groundcovers, and drought-tolerant native rosemary (*Westringia fruticosa*).



**WARM GREYS FEATURES (CLOCKWISE FROM TOP): CEMINTEL CLADDING EDGE® OXFORD 150MM PAINTED DULUX® WEATHERSHIELD® IN DULUX® WHAKAREWAREWA HALF (LOW SHEEN) | CEMINTEL CLADDING TERRITORY™ QUARRY URBAN GREY GUTTER/FASCIA/TRIMS COLORBOND® MONUMENT® & COLORBOND® SOUTHERLY® METAL ACCENT STAINLESS STEEL ACCESSORY MASSON TANIMI CYLINDER EXTERIOR CONCRETE WALL LIGHT | MONIER™ ROOFING TERRACOTTA URBAN SHINGLE ROOF TILE – RAVINE | BACKGROUND PAINT ACCENT DULUX® SILKWORT**

# Modernist

REFINED & GROUNDED

BRADFORD™ VENTILATION  
WINDMASTER™ ROOF VENT  
COLORBOND® SURFMIST®

HEBEL POWERPANEL™  
CLADDING BAGGED  
SURFACE IN DULUX® TUFT

MONIER™ ROOFING  
CONCRETE HORIZON  
ROOF TILE – SEASHELL

PGH BRICKS  
ELEMENTS – JAROSITE

PGH STONE  
RUGGED LEDGESTONE –  
SILVER PEAK

Refined and grounded, a Modernist home can have a flat or pitched roofline and with its connected indoor/outdoor spaces, makes for a highly liveable design style.

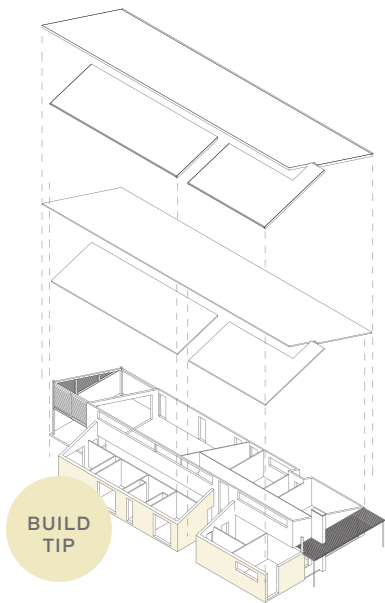
An update on the Mid-Century Modern aesthetic, our *Modernist* home design draws on architectural styling of that period to create a light-filled and liveable family home using a mixed material facade and carefully placed windows.

Let natural materials shine on a *Modernist* home by using grounded and textured exterior cladding with a flat or pitched roofline. Embrace textural yet simple exterior materials and bring the outside in through internal gardens and courtyards. *Modernist* home designs complement the *Pure Naturals* material palette, using soft textures that reference natural materials and reflects the trend towards rustic finished materials.

For a bolder and more streamlined look, consider the rich reds and sleek materials of our *Soft Earth* palette on Page 24.

SCAN QR CODE TO  
VISUALISE IN CSR IDESIGN





**WHAT YOU CAN'T SEE**

Don't forget the products that lie in the hidden layers of your home also contribute to its performance.

This *Modernist* home design uses Bradford Enviroseal™ Wall Wrap, a vapour permeable wall wrap which allows moisture to safely escape your home, helping to reduce the risk of condensation damage.

BUILD YOUR HOME IN

# Pure Naturals

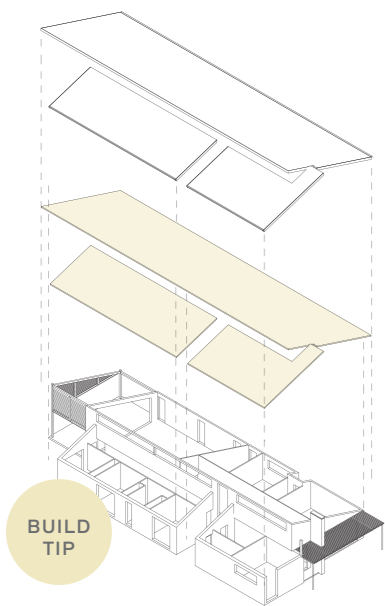
This refreshing palette of soft creams is complemented by stone cladding and bagged surfaces. Celebrating the connection between indoor and outdoor spaces, the Pure Naturals material palette pairs perfectly with an authentic and liveable Modernist home design.

**PRODUCT & STYLING TIPS**

- 1 Choose an acrylic coating system for external walls built with Hebel in your choice from the *Pure Naturals* palette, such as a warm neutral that pairs perfectly with textural bricks and stone.
- 2 Consider how your bricks stack up and what holds them together; a Stretcher bond with raked off-white mortar will create dimension and slight shadowing to your brickwork, perfect for the textural characteristics of a *Modernist* home.
- 3 Extend the warmth and texture of brick and stone from your facade through outdoor feature seating or a fireplace, surrounded by soft, unstructured native plantings.



PURE NATURALS FEATURES (CLOCKWISE FROM TOP): HEBEL POWERPANEL<sup>XL</sup> CLADDING RENDERED WITH DULUX<sup>®</sup> ACRATEX<sup>®</sup> COATING SYSTEM IN DULUX<sup>®</sup> TUFT | BRADFORD™ VENTILATION WINDMASTER™ ROOF VENT – COLORBOND<sup>®</sup> SURFMIST<sup>®</sup> | PGH STONE RUGGED LEDGESTONE – SILVER PEAK GUTTER/FASCIA/TRIMS COLORBOND<sup>®</sup> SURFMIST<sup>®</sup> & COLORBOND<sup>®</sup> DOVER WHITE™ | PGH BRICKS ELEMENTS – JAROSITE MONIER™ ROOFING CONCRETE HORIZON ROOF TILE – SEASHELL | BACKGROUND PAINT ACCENT DULUX<sup>®</sup> CAT MINT



**WHAT YOU CAN'T SEE**

Don't forget the products that lie in the hidden layers of your home also contribute to its performance.

This *Modernist* design uses Bradford Gold™ and Gold™ High Performance Ceiling Batts as thermal barriers to slow down temperature change to the inside of the home, keeping your house warmer in winter and cooler in summer.

BUILD YOUR HOME IN  
**Soft Earth**

The rich reds and terracottas of the Soft Earth material palette reflect the Australian landscape while celebrating its raw materials. Warm and authentic, a Modernist home design suits the rugged beauty of this palette.

**PRODUCT & STYLING TIPS**

- 1 Terracotta roof tiles offer a richness and depth of colour that will never fade, ensuring the beauty of your home for decades. Alternatively, for a more refined roof finish opt for Monier's Terracotta Urban Shingle flat profile roof tile in Earth.
- 2 Hebel PowerPanel<sup>XL</sup> in a bagged render finish will bring a highly textured look to your home paired with a light brick such as PGH Morada Ceniza to complement fibre cement cladding.
- 3 Stick to natural materials when creating a landscape to complement the *Soft Earth* palette, such as rich timber decking and pebbled driveways edged with terracotta bricks and native grasses.



SOFT EARTH FEATURES (CLOCKWISE FROM TOP): MONIER™ ROOFING TERRACOTTA MARSEILLE ROOF TILE – SUNSET  
CEMINTEL CLADDING BARESTONE® ORIGINAL | BRADFORD™ VENTILATION AIROMATIC™ ROOF VENT – COLORBOND® HEADLAND®  
CEMINTEL CLADDING ASPECT CLADDING® PAINTED DULUX® WEATHERSHIELD® IN DULUX® LINSEED (LOW SHEEN) | GUTTER/FASCIA/TRIMS  
COLORBOND® GULLY® & COLORBOND® WOODLAND GREY® | TIMBER ACCENT RICH WARM TIMBER | ACCESSORY DESIGNER DOORWARE  
NEO BLADE DOOR HANDLE | BACKGROUND PAINT ACCENT DULUX® WHITE DUCK

# Classic

RELAXED & WELCOMING

PGH STONE  
NATURAL FIELDSTONE -  
ALPINE GREY

BRADFORD™ VENTILATION  
WINDMASTER™ ROOF VENT  
COLORBOND® SOUTHERLY®

MONIER™ ROOFING  
CONCRETE ATURA ROOF  
TILE - SILVER PERCH

CEMINTEL CLADDING  
BALMORAL WEATHERBOARDS  
180MM IN DULUX® MILTON MOON

Classic homes have a relaxed and welcoming feeling. With traditional gable rooflines and distinctive fibre cement cladding, this style of home is reassuringly familiar.

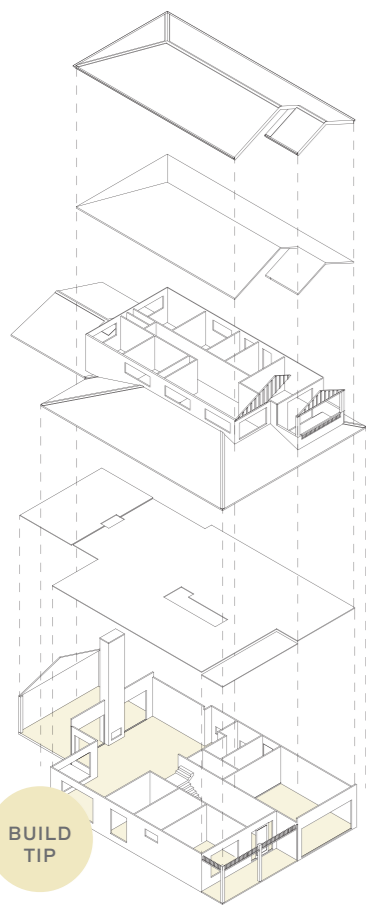
Referencing the popular Hamptons look of recent years, but updating it for contemporary Australia, our *Classic* home design features linear timber details and a muted colour scheme.

This home has been built in *Fresh Greys*, a light-coloured palette that heroes linear detailing. Our *Classic* home design embraces the familiar aesthetic of the popular Hamptons style, adapting and updating it for our Australian climate, lifestyle and landscape. *Classic* homes have a relaxed and welcoming design. With traditional exterior timber cladding choices, and gable rooflines, this style of home is comforting. Incorporate natural stone to soften the exterior and connect to the outdoors through wide verandahs and generous gardens.

For a crisper look, try the versatility and freshness of our *Bright Whites* palette on Page 32.

SCAN QR CODE TO  
VISUALISE IN CSR IDESIGN





**BUILD TIP**

**WHAT YOU CAN'T SEE**

Don't forget the products that lie in the hidden layers of your home also contribute to its performance.

In this *Classic* design, Cemintel Constructafloor® can be combined with a suitable waterproofing system and covered with your selection of tiles, decorative finishes, synthetic turf, outdoor carpets or suitable paint finishes for true indoor/outdoor living.

BUILD YOUR HOME IN

# Fresh Greys

Celebrate natural, light and easy-to-live-with grey tones. The ultimate in soft neutrals, the Fresh Greys material palette is a new take on this still-popular palette, complementing a Classic home design with textural details.

**PRODUCT & STYLING TIPS**

- 1 Complete the look with Cemintel Edge™ Cladding used as eaves; white trims on grey weatherboards create a striking facade.
- 2 Elevate your roof with A-line ridging, which complements a more streamlined profile roof tile such as those in Monier's Concrete Horizon range, or even the Atura range in Silver Perch, which features a medium profile.
- 3 A variety of flowering shrubs, such as camellias, azaleas, hydrangeas and shade-tolerant Impatiens or Native Violets will ensure blooms year-round in a *Classic* home garden.



FRESH GREYS FEATURES (CLOCKWISE FROM TOP): PGH STONE NATURAL FIELDSTONE – ALPINE GREY | CEMINTEL CLADDING BALMORAL® WEATHERBOARDS 180MM PAINTED DULUX® WEATHERSHIELD® IN DULUX® MILTON MOON (LOW SHEEN) | TIMBER ACCENT WHITE TIMBER TRIMS GUTTER/FASCIA/TRIMS COLORBOND® DOVER WHITE™ & COLORBOND® SOUTHERLY® | BRADFORD™ VENTILATION WINDMASTER™ ROOF VENT – COLORBOND® SOUTHERLY® | MONIER™ ROOFING CONCRETE ATURA ROOF TILE – SILVER PERCH BACKGROUND PAINT ACCENT DULUX® MANORBURN



# Coastal

SIMPLE & EFFORTLESS

BRADFORD™ VENTILATION  
WINDMASTER™ ROOF VENT  
COLORBOND® SURFMIST®

MONIER™ ROOFING  
CONCRETE ELABANA  
ROOF TILE – SALT SPRAY

CEMINTEL CLADDING  
HEADLAND® WEATHERBOARDS  
IN DULUX® WHITE ON WHITE™

HEBEL POWERPATTERN®  
TRACK 100MM CLADDING  
BAGGED SURFACE IN  
DULUX® WHITE ON WHITE™

PGH BRICKS COMMONS –  
PAINT GRADE COMMON IN  
DULUX® WHITE ON WHITE™

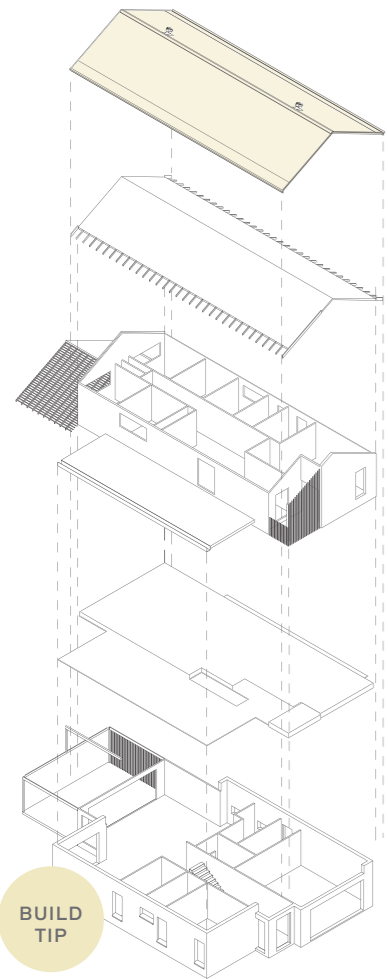
With varying rooflines and mixed materials, a Coastal home has a simple and effortless style.

Coastal home designs pay homage to Australia's spectacular ocean beaches, featuring expansive windows, weatherboards, and open-plan living to connect the indoor and outdoor spaces.

This Coastal home design is built in our *Bright Whites* material palette, a perfect choice to allow the architecture to be the hero. With a mixed material facade and varying rooflines, a Coastal home has a simple and effortless style. This relaxed and easy-going design uses lightweight materials and prioritises connection to the outside to encourage airflow and invite in nature and light. The key to making this design a success is a mix of textures – and choosing a fresh, all-white material palette can unite those textural layers.

SCAN QR CODE TO  
VISUALISE IN CSR IDESIGN





**BUILD TIP**

**WHAT YOU CAN'T SEE**

Don't forget the products that lie in the hidden layers of your home also contribute to its performance.

In a *Coastal* home design, make the most of natural light and bring in fresh air whenever possible through large windows and Bradford WindMaster™ wind-driven roof ventilation.

BUILD YOUR HOME IN

# Bright Whites

Freshen up a Coastal exterior with the Bright Whites material palette, which allows the architecture to take centre stage. A perfect choice for detailed facades, the key to an all-white palette is to add varying textural layers to create depth and interest.

**PRODUCT & STYLING TIPS**

- 1 Add instant character and highlight the textural beauty of existing materials with paint; full strength for bricks and half strength for timber trims.
- 2 Have a narrow block? Choose horizontal cladding such as Cemintel Balmoral for *Classic* designs and Cemintel Edge for *Coastal* to help create the illusion of width.
- 3 When planning your outdoor spaces to pair with a *Bright Whites* palette, add classical garden elements such as a gazebo or timber outdoor furniture painted in the same shades. For beachside homes, consider an outdoor shower, framed by Coast Banksia (*Banksia integrifolia*) or Native Wisteria (*Hardenbergia comptoniana*) for perennial charm.



**BRIGHT WHITES FEATURES (CLOCKWISE FROM TOP):** MONIER™ ROOFING CONCRETE ELABANA ROOF TILE – SALT SPRAY | PGG BRICKS COMMONS – PAINT GRADE COMMON PAINTED DULUX® WHITE ON WHITE™ | PGG PAVERS WIRECUT – ACORN | CEMINTEL CLADDING HEADLAND® WEATHERBOARDS PAINTED DULUX® WEATHERSHIELD® IN DULUX® WHITE ON WHITE™ (LOW SHEEN) | GUTTER/FASCIA/TRIMS COLORBOND® DOVER WHITE™ & COLORBOND® SURFMIST® | HEBEL POWERPATTERN® TRACK 100MM CLADDING RENDERED WITH DULUX® ACRATEX® COATING SYSTEM IN DULUX® WHITE ON WHITE™ | TIMBER ACCENT NATURAL GROOVED TIMBER | BACKGROUND PAINT ACCENT DULUX® WHITE ON WHITE™



OUR TOP TIPS FOR

# Design & Product Selection

CSR is one of the leading providers of building solutions from the roof down, bringing the best of Australian ingenuity to residential homes.

When building, make sure you have selected performance products for your home. CSR can guide you through design and product selection as you build.

## 1 Your home design

The best way to start your build journey is to ensure your home design is considered from the beginning. Think about the way you live, discover your style, and then explore the home design that best suits you.

From *Contemporary* to *Classic*, *Barnhouse* to *Coastal*, *Modernist* to *Industrial*, there are many home designs to choose from. Take our *CSR Style Quiz* online to discover the home design that works for you, then overlay our material colour palettes to bring your home to life.

## 2 Consider your location

Your location is important when considering your style. Lighter shades and airy designs often work better in warmer climates, while dark palettes are often suited to cooler areas. These colour choices may influence the overall energy assessment of the home and there may be benefit in considering colour when building to a 7-Star rating.

The distance from your home to the coast or the bush, especially in bushfire-prone areas, will also influence the choice of material.

Where you position your home on your block can affect how the home performs. Try to place living spaces on the north-facing areas of your home and limit windows on the west side, or add blackout blinds or exterior awnings. Deciduous trees can provide shade during the hotter months, while allowing natural light during winter. Plants native to your area can also help to attract birds and other wildlife.

## 3 What materials to use

There are a multitude of CSR products to choose from, starting from the exterior to the interior, and even hidden within your home. This *CSR Style Guide* explores the ranges available – and the material colour palettes you can use to bring your home to life.

Choose from classic or streamlined profiles in tiles and bricks, through to modern (and maintenance-free) fibre cement products and easy-care Hebel, along with technology-led, energy-efficient ventilation, insulation, wall wraps and sarking.

All CSR products are available in a variety of colours, sizes, profiles and textures, allowing you to build the style you want, from the outside in.

## 4 Thinking about the details

Once you have decided on your home design and material colour palette, it's time to look at the details.

### ROOF

For roofing, assess whether you want tiles with a flat or classic profile, and which style of ridge capping you prefer. The traditional method of capping overlaps, while A-line Ridge capping aligns the capping of the roof end-to-end in one clean, straight line, with no steps.

### FACADE

Decide how your bricks are laid (known as the *bond*) – the most common bond is a Stretcher bond. Stacked and Flemish bonds are also popular or you can choose Hit-and-miss brickwork (popular for screening), which allows natural light to shine through. Mortar colours and styles will also play a part in the final look of brick.

Fibre Cement Cladding systems such as Cemintel can be installed in a myriad of ways, from an overlapping, or ship-lapped joint system, to streamlined joints. Most exterior cladding systems can be installed in different orientations; vertical grooved panels will help to elongate a home, while horizontal panels will make a building seem wider. Hebel PowerProfile offers a distinctive facade with the look of traditional standing seam, metal cladding systems. Two profiles in three colours are available to customise your home.

### GUTTERS & FASCIA

These elements frame your new house and should be chosen with care. If your overall material colour palette is quite uniform and monochromatic it's best to keep gutters and fascia in the same or similar colour as your roof to ensure a coherent look. For a more distinctive outcome, especially in palettes using varied or contrasting materials and colours, you can either match the gutter to the roof and the fascia to the main tones found in your cladding, or select one colour for both the gutter and fascia and contrast it to the colour used on your roof.

### LANDSCAPING

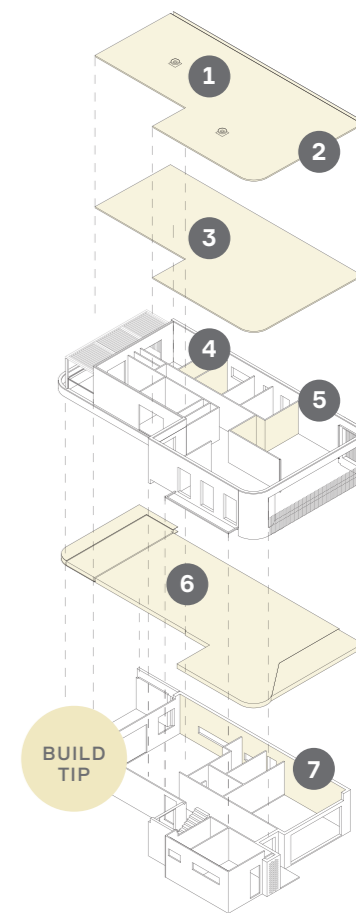
Street appeal is key and goes beyond your building facade materials. Frame your property to complement your chosen house design by using the same exterior materials in landscaping elements, such as the front fence, pathway and porch. Choosing natives for your plantings can also encourage local birdlife and promote shade, as most Australian natives are evergreen.

## 5 What you can't see

CSR is helping Australians choose energy-efficient and sustainable materials in their build and CSR products are designed for the Australian lifestyle and climate.

Bradford Insulation helps keep homes cooler in summer and minimises heating demands during winter. Bradford roof, wall and underfloor products stabilise temperature and improve energy efficiency, while wall wraps, and roof sarking products assist in managing condensation risk and protect the building frame from the weather. Combined with Bradford roof and sub-floor ventilation, these products help to manage heat in summer and condensation in winter.

Go above and beyond the mandatory 7-Star energy assessment for your new home, with additional material choices to improve the performance of your new home. The building code does not regulate every aspect of performance for each climate zone, so consider acoustics, condensation control and even additional thermal performance during design. Improvements in these areas are easy when you build, but difficult to retro fit. A higher performing home consumes less energy during its life, making the investment good for you as well as the environment.

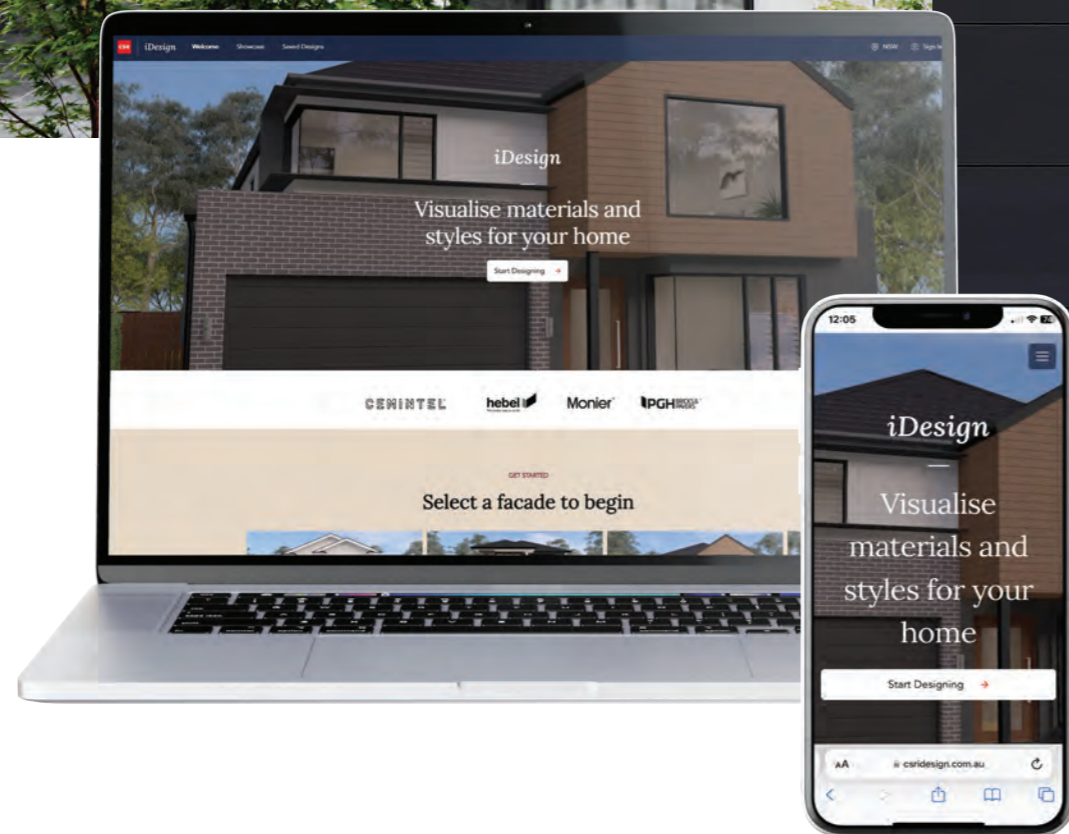


Our *Contemporary* double storey home design build tip shown here not only looks good – within its layers are performance and energy efficiency products that help it feel as good as it looks.

- 1 BRADFORD VENTILATION
- 2 BRADFORD ANTICON™ ROOF BLANKET
- 3 BRADFORD THERMOSEAL™ ROOF SARKING
- 4 BRADFORD GOLD™ AND GOLD™ HI-PERFORMANCE WALL & CEILING BATTS
- 5 BRADFORD SOUNDSCREEN™ ACOUSTIC INSULATION
- 6 CEMINTEL CONSTRUCTAFLOOR® & HEBEL POWERFLOOR
- 7 BRADFORD ENVIROSEAL™ WALL WRAP



SCAN THE QR CODE TO READ OUR COMPREHENSIVE & EXPANDED STEP BY STEP PRODUCT SELECTION GUIDE



Use the CSR iDesign visualiser tool to explore the home designs and material colour palettes you have seen in this brochure and bring your home to life.



EXPLORE CSR IDESIGN DWELLING.CSR.COM.AU

# Bring Your Home To Life

Inspired? Begin your building journey with confidence by learning from the experts at CSR. Here are your next steps:

- 1 Start with the *CSR Style Quiz*. It will help you articulate your personal style and understand what materials resonate with you.
- 2 Next, use the *CSR iDesign* visualiser tool to explore the home designs and material colour palettes featured in this brochure. Using the latest 3D technology, you can apply all nine new palettes onto any of our six designs.
- 3 Visit a CSR selection centre (with your plans and photos) to experience the materials in situ and at scale, while you chat with our experienced CSR design staff and understand how your choices will work with your overall house design.
- 4 Book a Colour Consultation to chat with us further so you can coordinate your entire facade colour scheme including bricks, cladding, roofing, gutter and fascia, window frames and garage doors.



TAKE THE CSR STYLE QUIZ DWELLING.CSR.COM.AU



 Bradford™

CEMINTEL®



 hebel®  
The better way to build

 Monier™  
ROOFING

 PGH BRICKS & PAVERS™

 @csrdwelling

TO FIND OUT MORE VISIT OUR WEBSITE  
DWELLING.CSR.COM.AU

CSR PRODUCTS AND IMAGES IN THIS BROCHURE HAVE BEEN REPRODUCED AS ACCURATELY AS POSSIBLE BUT VARYING LIGHT CONDITIONS, LIMITATIONS OF PHOTOGRAPHY AND THE PRINTING PROCESS MAY AFFECT COLOUR TONES. WHILST EVERY EFFORT IS MADE TO PROVIDE ACCURACY THEY SHOULD BE VIEWED AS A GUIDE ONLY. WE RECOMMEND CHECKING YOUR CHOSEN COLOUR AND PRODUCT AGAINST ACTUAL SAMPLES BEFORE PURCHASING BUT, DUE TO THE MANUFACTURING PROCESS AND RAW MATERIALS USED, PLEASE NOTE THAT CSR PRODUCTS CAN VARY FROM SAMPLES REGARDING COLOUR, TEXTURE AND SURFACE FINISH.